

# DYADIC DEVELOPMENTAL PSYCHOTHERAPY

## Study Day— Friday, May 26, 2017

Come refresh your DDP skills and learn how DDP can be effective with families who have experienced great stresses, including relationship trauma. This study day is for those interested in learning more about Dyadic Developmental Psychotherapy (DDP – Dr. Daniel Hughes' Attachment-Focused Family therapy model) as well as people already trained in DDP who want to refresh their skills.

Join Betty J.B. Brouwer, Michelle Hogeterp and Sian Phillips as they lead the conversations and presentations. The day will consist of presentations, case studies, and opportunities to practice PACE. Attendees are encouraged to come with with related questions about using the model in their practice.

**9:00 am - 3:30 pm**

Registration begins at 8:30 am

**COST:** \$75.00 includes lunch and refreshments

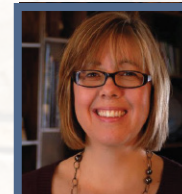
**LOCATION:** Youth Service Bureau (YSB)  
2675 Queensview Drive  
Ottawa, ON

**REGISTER:** call Shalem Mental Health Network  
toll free at 866.347.0041  
or register online at:

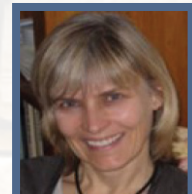
[shalemnetwork.org/workshop/ddp-study-day-2017](http://shalemnetwork.org/workshop/ddp-study-day-2017)



Betty Brouwer



Michelle Hogeterp



Sian Phillips